

Nicklaus
Children's
Hospital

Where Your Child Matters Most

Community Giving Council at Nicklaus Children's

nicklauschildrens.org/givingcouncil



About the Community Giving Council at Nicklaus Children's

The Community Giving Council at Nicklaus Children's is an interactive philanthropic group of volunteers who are passionate about furthering the hospital's vision of creating a healthy future for every child. Members have a seat at the table, working alongside health system and hospital leadership to align fundraising dollars to the current and future priorities of Nicklaus Children's. Members will directly participate in fund allocation to hospital programs.

Member Participation and Annual Requirements

- \$10,000 annual minimum gift* payable in full
**donation must be a new gift, cannot be reallocated from a previous pledge or payment.*
- Hospital programs will present their funding opportunity (with a maximum budget of \$25,000). The giving council will discuss and vote on which program to fund.

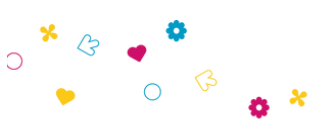
Meeting Cadence

Meetings are held quarterly.

Contact Us

Nicklaus Children's Hospital Foundation
givingcouncil@nicklaushealth.org





Community Giving Council at Nicklaus Children's FAQ

nicklauschildrens.org/givingcouncil



How often does the Community Giving Council meet?

The group meets quarterly.

If funds are not spent by the next quarter, what happens to the approved money?

Any unused funds will be re-purposed back to the giving council as available monies.

Who submits fund requests and how many are reviewed at each meeting?

During each meeting, funding opportunities will be presented by hospital program leaders seeking support.

As a member, how many votes am I allocated at the monthly meeting?

Council members have 1 vote.

Can I allocate a current Nicklaus Children's Hospital Foundation pledge towards the giving council?

An existing pledge cannot be used towards membership. New donation commitments only.

Is there a maximum number of giving council members?

No. We are excited to offer current and future donors the opportunity to have direct decision opportunities to support our health system programs.

What is my tenure on the giving council?

Membership is a one-year commitment per \$10,000 donation.

